



**iTrackII**  
MINING TPMS 24/7

# A NEW STANDARD IN TIRE MONITORING



**BROWNFIELD**

translogik®  
[www.trans-logik.com](http://www.trans-logik.com)





# System Benefits and Examples of Value Creation

## A New Standard in Tire Monitoring

The iTrack II Mining Tire Monitoring System provides fast, accurate, reliable real-time data on the condition of your tires, combined with live tracking of vehicle location and status. Existing iTrack users have reported increases in tire life of up to 30% and fuel savings of up to 3%. Savings of this magnitude provide a rapid return on investment with the iTrack system paying for itself in as little as six months.



### Key Functionality

- |   |                               |                                  |
|---|-------------------------------|----------------------------------|
| • Real-Time Temperature & Pressure Monitoring | • 6 Axis Accelerometer        | • Heat Map & Route Analysis      |
| • Geo-Fencing – speed and safety zone alerts  | • GPS (including GLONASS)     | • Linux Operating System         |
| • Wi-Fi (MIMO)                                | • CAN Interface               | • In-Cab Display (optional)      |
| • USB Port (data download)                    | • Mobi Track (user interface) | • Internal UPS (12 hours)        |
| • Multi-Frequency Antennas                    | • Ethernet Port (RJ45)        | • Dual SIM Cellular Connectivity |

### Reduce Truck Downtime

Our Data Analytics service allows targeted maintenance schedules to be created, thus reducing truck downtime. Early identification of air leaks and managing tire temperatures reduces the number of premature tire failures which in turn reduces the amount of tire maintenance required.

### Increased Tire Performance

Correctly maintained tire pressures will reduce rolling resistance which in turn will increase fuel efficiency, maximize tire life and reduce side wall cuts.

### Reduce Tire Inspection Times

Tracking live pressures and temperatures in real-time will reduce or eliminate the need to take manual pressure checks.

### Improve Inflation Pressures

The system calculates and displays cold inflation pressures, making it possible to inflate the tire to the manufacturers recommended pressure whether the tire is cold or hot.

### Increase Savings

BHP Spence saved \$1.1 M USD in the first year of using iTrack.

### Reduce Tire Alerts

Since using iTrack a mine in Chile has reduced the level of tire related alerts from 221 alerts in January 2016 to 3 alerts within 6 months.

Another mine recorded 749 alerts before using iTrack which has now been reduced to only 62 alerts.

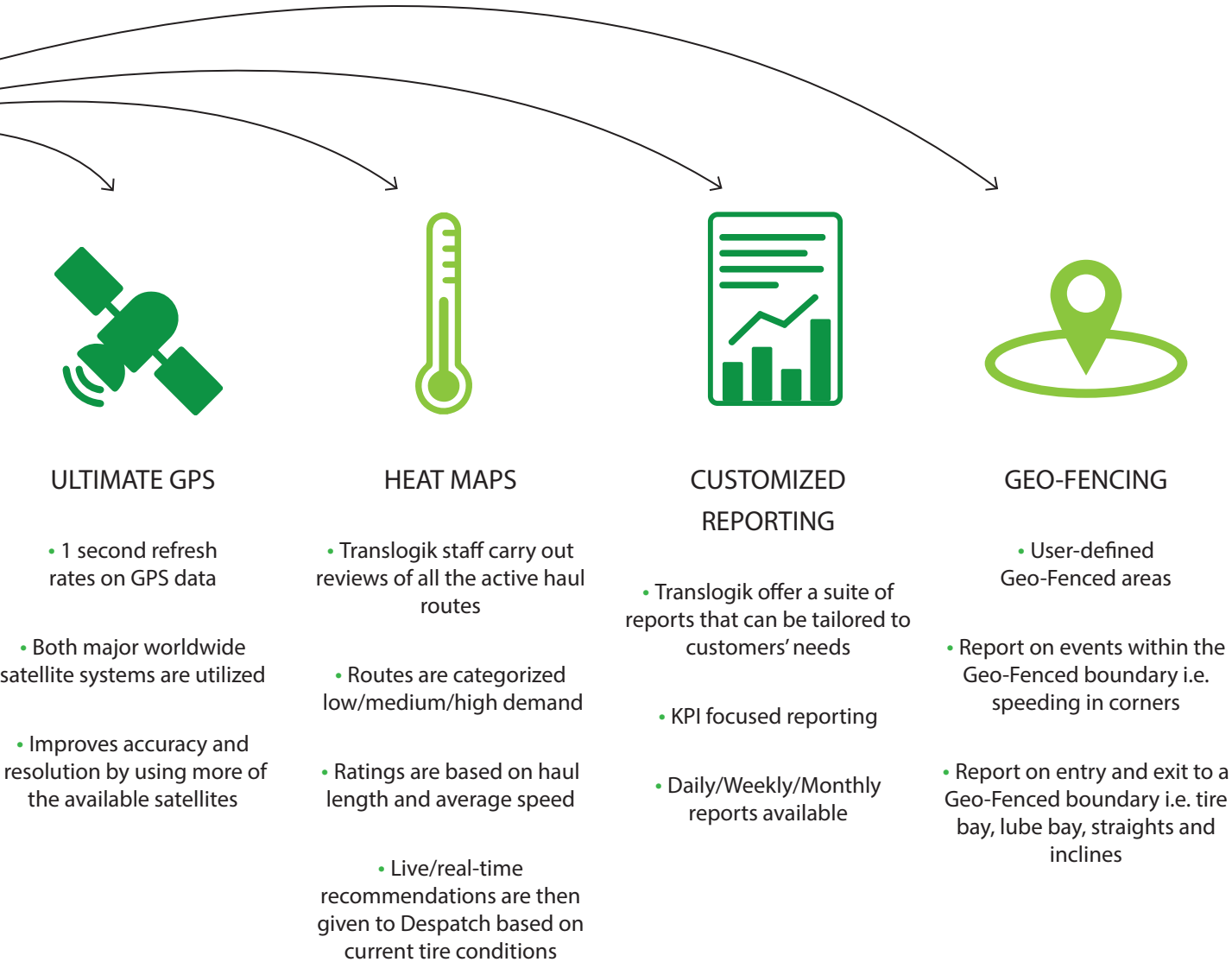
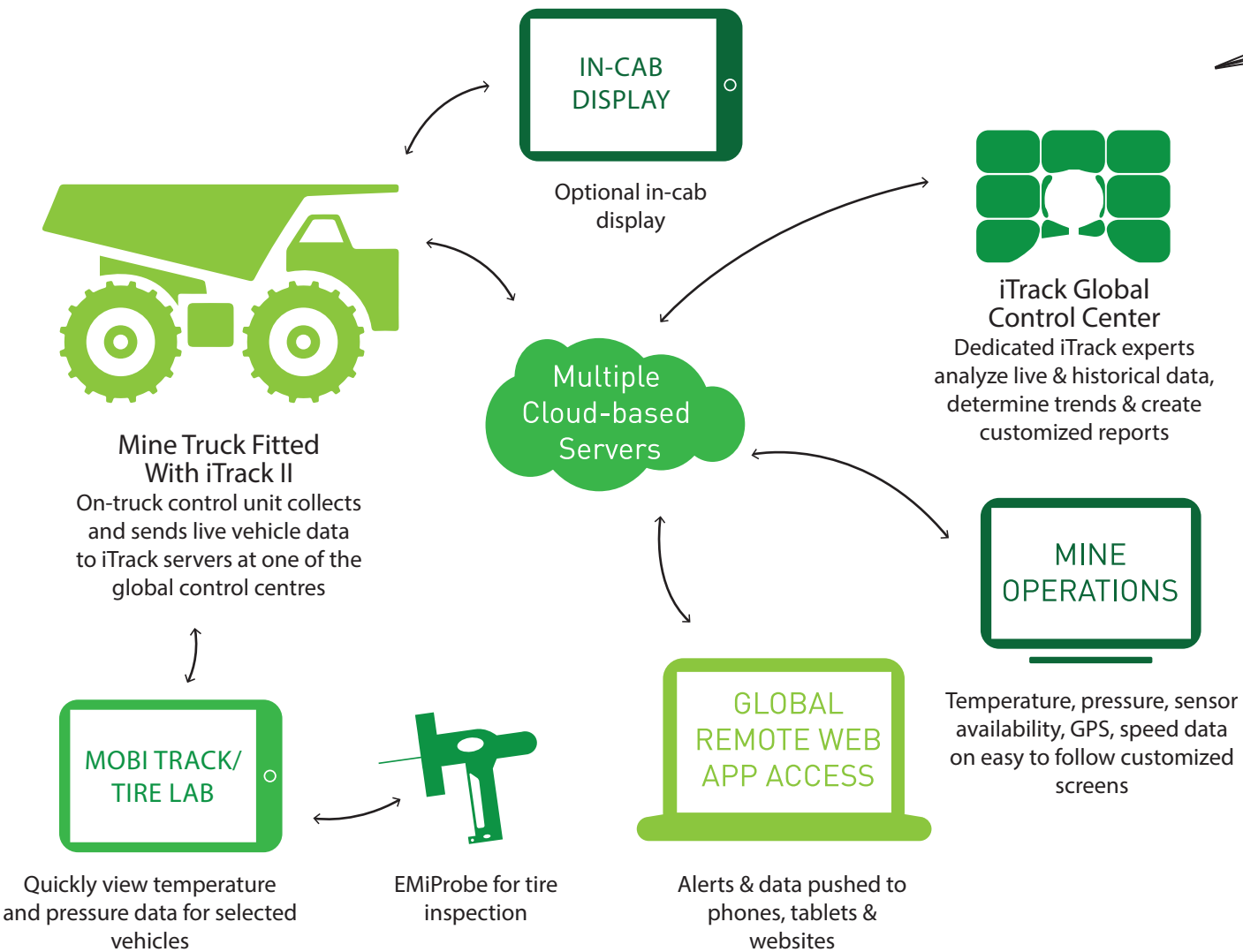
### Increased Productivity

A mine in Chile has not had to isolate a single truck due to hot tires for over a year.

### Unrestricted 24/7 Access to Independent Live Data

Translogik are entirely independent of any tire or truck OEM making our data objective and impartial.

iTrack II System Overview



iTrack II Benefits

- Increase in average truck speed
- Increase in productivity
- Increase in tire life by up to 30%
- Avoid tire failures
- Reduce thermal separations
- Improve safety
- Reduce cycle times
- Reduce fuel usage by up to 3%
- Increase vehicle availability
- Reduce vehicle downtime



Data Analytics

Increase knowledge of tire behavior using data analysis



Targeted data analysis of pressures and temperatures can also be used to detect incorrect load distributions, predict suspension failures, eliminate manual tire pressure checks and much more. All of these benefits increase health and safety as well as reducing maintenance and downtime, which maximizes the hours a truck is working, which directly correlates to an increase in production. This previously unavailable 24/7 data also serves to improve maintenance standards and safety procedures.

iTrack Control Room - Training - Truck Potential Uptime

Improvements in on-site training

Training can be focused based on real data recorded by iTrack II. This will include data from areas such as Geo-Fencing and any operational problems caused by excessive braking or speeding. This will increase awareness about the importance of good driver performance.

Maximize truck potential

Improve productivity by determining which trucks are underperforming on production targets and focus your maintenance resources on rectifying the vehicles which are affecting the productivity rates.

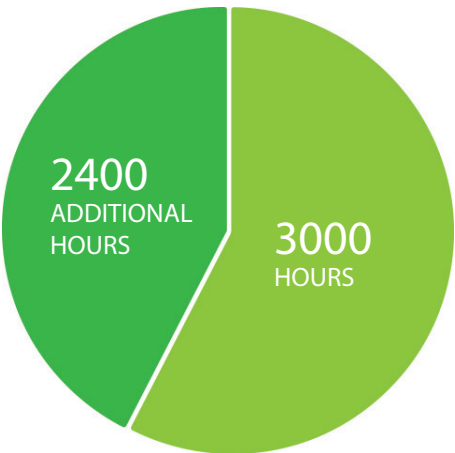


- 24/7 Control room solely dedicated to iTrack customers
- Translogik staff report analytics live or on a daily/weekly/monthly basis
- Reporting is tailored to the customers' needs

Case Study - Coal mine in Australia

This 18 truck mine has increased tire life from 3,000 to 5,400 hours since the implementation of iTrack.

This equates to a saving of:  
\$1.62 M USD per year



18 x 793 TRUCKS	PRE iTRACK	POST iTRACK
AVERAGE TIRE LIFE	3,000 HOURS	5,400 HOURS
STEER TIRES PER TRUCK PER YEAR	5	2.7
TIRES USED PER YEAR	90	48.6
MONTHLY TIRE SPEND	\$225,000 USD	\$90,000 USD
POTENTIAL SAVINGS PER YEAR		\$1,620,000 USD

CODELCO, Chile.

- Raúl Molina, Superintendent of Projects and Development DMH

“ Thanks to the real-time information we now have from the iTrack system and the control this gives us, we are able to provide a safer environment for our workers, increasing the average tire performance by about 200 hours and increasing the average time between tire incidents and failures, allowing us to increase the average speed of our trucks by more than 20%, which means that every hour using the tires (or iTrack system) is more productive than before, allowing us to considerably increase production rates from the mine. ”



# translogik®

 Translogik

 @Translogik

 TranslogikTV

  
bhpbilliton

 **OTARCO**  
ADMINISTRACIÓN GLOBAL DE NEUMÁTICOS

  
**BROWNFIELD**  
Engineering and Maintenance Pty Ltd  
"Safe, Reliable, Technical Assurance"

**THIESS**

**KALTIRE**

 **KLINGE™**

**RELIPER**

 **WATS**  
West Africa Tire Services Ltd.

  
**CODELCO**

 **ANTOFAGASTA**  
MINERALS

**BMA**  
BHP Billiton Mitsubishi Alliance

 **MAR-JAC OTR**  
魔术 OTR TYRE SUPPLY & MANAGEMENT SOLUTIONS

**GLENCORE**

 **Downer**

**RioTinto**

 **ANGLO AMERICAN**

## Your Local Distributor

Brownfield Engineering & Maintenance Pty Ltd

E: [darryl@brownfield.com.au](mailto:darryl@brownfield.com.au)

M: 0418752058

  
**BROWNFIELD**  
Engineering and Maintenance Pty Ltd  
"Safe, Reliable, Technical Assurance"

# [www.trans-logik.com](http://www.trans-logik.com)