



**Brownfield Engineering and Maintenance Pty Ltd**  
QLD – NSW – WA

Tel: +61 (0) 7 4914 2640  
Fax: +61 (0) 7 4914 2631

[www.brownfield.com.au](http://www.brownfield.com.au)

2016

# About Translogik



Translogik provides a range of hardware and software solutions for tyre management and tracking, data collection and fleet management focused on all segments of the tyre industry.

Translogik is a trading division of Transense Technologies plc, a UK company listed on the LSE and independent of any tyre or wheel manufacturer. Transense is a globally recognised expert on sensor technology with numerous patents, and is working with large global OEM's such as GM and GE.



1

Wireless tread depth and tyre pressure inspection tools

2

Tyre temperature and pressure monitoring systems for OTR and truck & bus

3

Real-time data logging

4

RFID tyre tagging solutions

5

Independent company

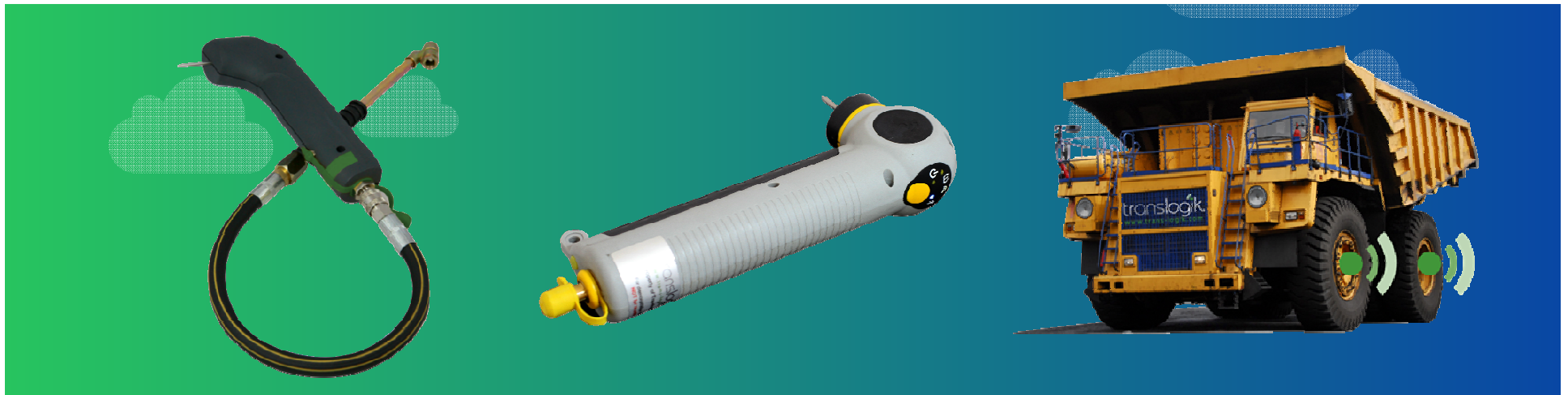
6

Trading division of Transense Technologies plc



# Translogik Product Family

Used in 41 Countries



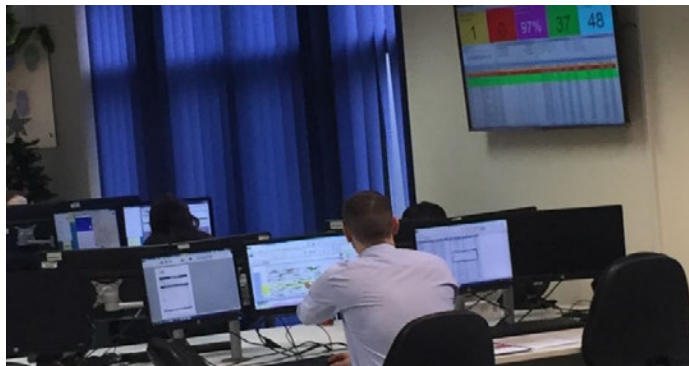
**BOSCH**



# iTruck TPMS Key Features

iTruck provides a rugged and reliable solution with a range of features that allow fleet operators to track their vehicle's tyre temperature and pressures, speed, braking and location in real-time and receive early warnings of potential tyre related issues.

This live data allows swift remedial action to be taken, which can be the difference between safe operation and a major incident.



1

**Real-time temperature & pressure monitoring**

2

**Live tracking of vehicle status & location**

3

**Geo-Fencing**

4

**Real-time email/SMS alerts**

5

**User configurable alarms & automatic alerts**

6

**Remote, live monitoring via any web browser**

# iTruck TPMS Key Benefits

1

Improve driver and vehicle safety

2

Extend tyre life, improve performance

3

Increase fuel efficiency and vehicle productivity

4

Reduce expensive roadside breakdowns

5

Help detect mechanical failures E.g. dragging brakes-heat

6

Live status monitoring 24/7/365 via web interface

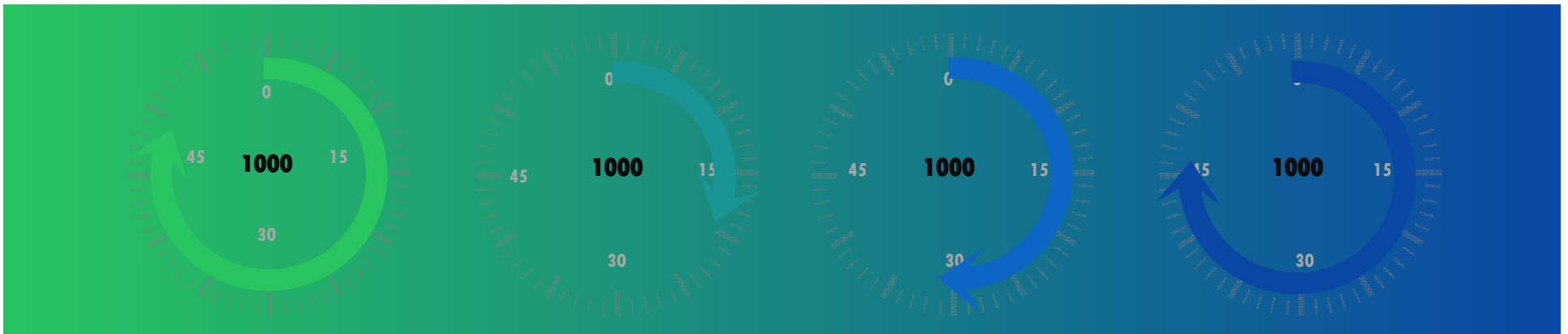
7

Comprehensive event reporting

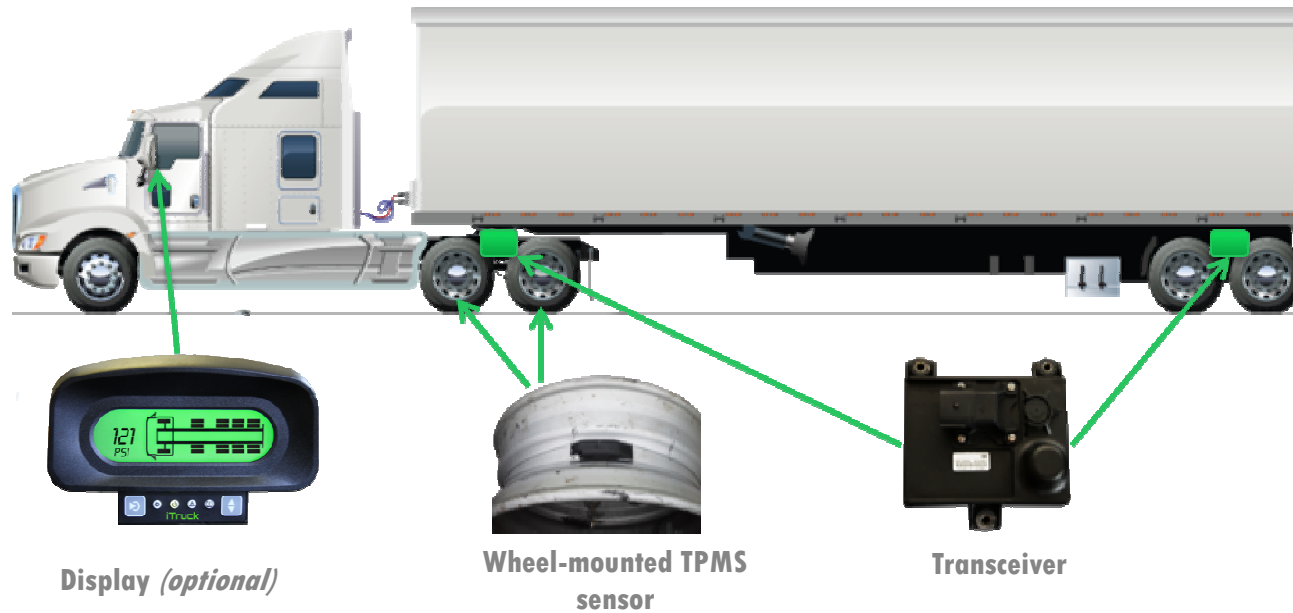


# iTruck Key Performance Indicators

- 1 Provide live 24/7/365 tyre temperature data from the in-tyre sensors
- 2 Provide live 24/7/365 tyre pressure data from the in-tyre sensors
- 3 Provide live GPS vehicle location
- 4 Provide live speed and braking data
- 5 Provide alerts for exceeding specified tyre temperature
- 6 Provide alerts for under/over specified tyre pressure
- 7 Provide alerts for exceeding specified speed limits, and exceeding braking thresholds
- 8 Provide access to data via web browser



# iTruck System Overview



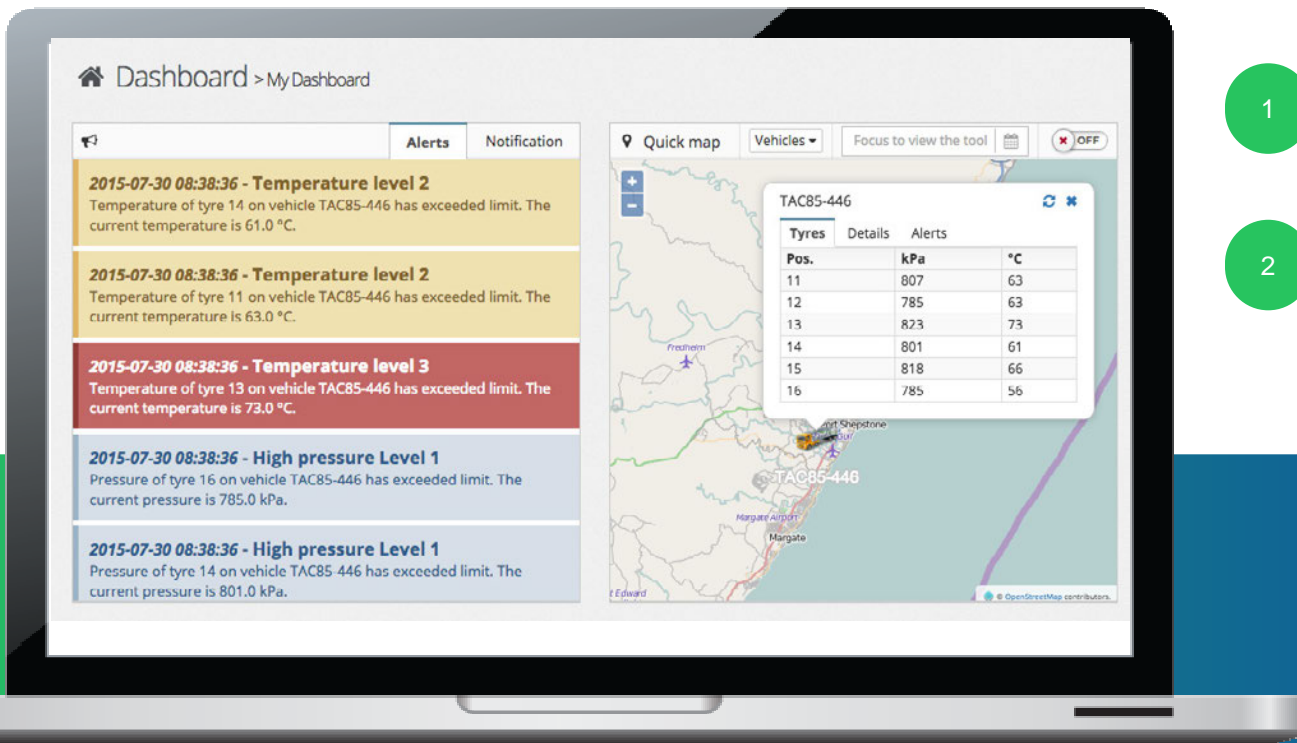
1

Wireless communication between TPMS sensors, Transceivers and Display

2

Automatic "drop 'n hook" recognition between Transceivers

# Live Monitoring - Dashboard



1

Overview of current fleet/truck status

2

Alerts sent via email and/or SMS (text message) to user defined recipients



# Live Monitoring – Tyre Temperature & Pressure



1

**Overview of current fleet/truck status**

2

**Alerts sent via email and/or SMS (text message) to user defined recipients**

# Live Monitoring – Detailed Reporting

Reports > Report

Widget Title

Vehicle Options

TAC95-446 2015-10-07 10:30 2015-10-08 10:30 Refresh

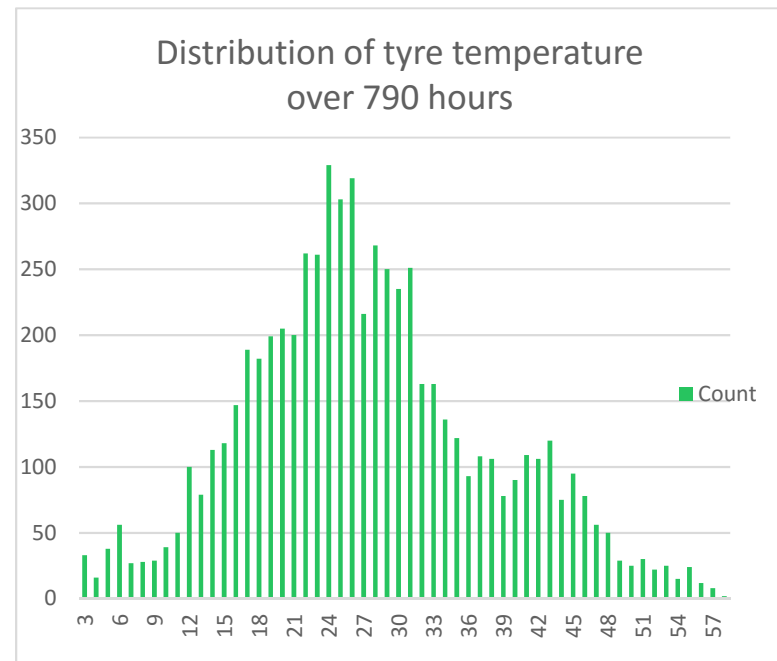
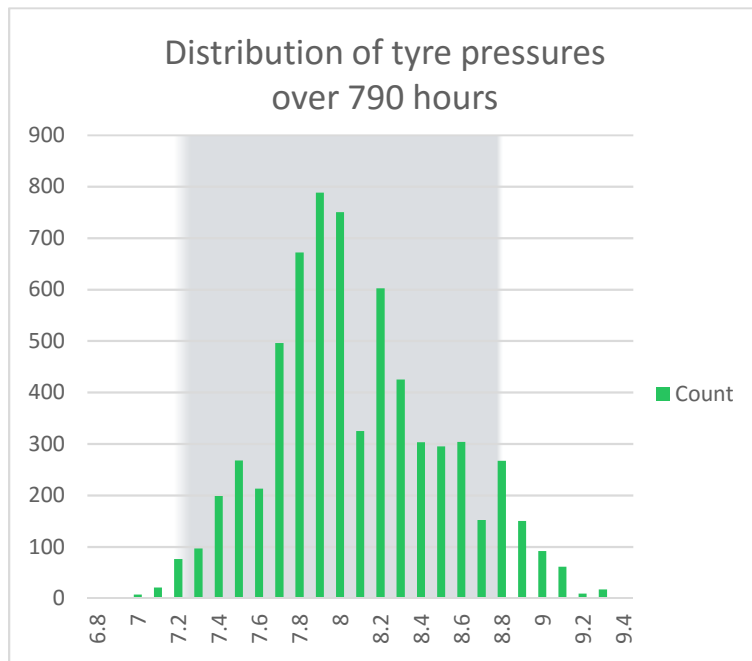
CSV Copy Excel Print 100

Vehicle Name	Measured At	Status/Speed	Pos. 11 kPa	Pos. 11 °C	Pos. 12 kPa	Pos. 12 °C	Pos. 13 kPa	Pos. 13 °C	Pos. 14 kPa	Pos. 14 °C	Pos. 15 kPa	Pos. 15 °C	Pos. 16 kPa	Pos. 16 °C
TAC95-446	2015-10-08 10:25	0 km/h	702.0	30.0	686.0	28.0	708.0	29.0	708.0	27.0	708.0	28.0	697.0	27.0
TAC95-446	2015-10-08 10:20	0 km/h	702.0	29.0	686.0	28.0	708.0	29.0	708.0	27.0	713.0	29.0	697.0	27.0
TAC95-446	2015-10-08 10:15	0 km/h	702.0	29.0	686.0	28.0	708.0	29.0	708.0	27.0	713.0	29.0	697.0	27.0
TAC95-446	2015-10-08 10:10	0 km/h	702.0	30.0	686.0	29.0	708.0	29.0	708.0	27.0	713.0	29.0	697.0	28.0
TAC95-446	2015-10-08 10:05	0 km/h	702.0	29.0	686.0	29.0	708.0	29.0	708.0	28.0	713.0	29.0	697.0	28.0
TAC95-446	2015-10-08 10:00	0 km/h	702.0	29.0	686.0	29.0	708.0	29.0	708.0	28.0	713.0	29.0	697.0	28.0
TAC95-446	2015-10-08 09:55	0 km/h	702.0	30.0	691.0	30.0	708.0	29.0	708.0	28.0	713.0	29.0	697.0	28.0
TAC95-446	2015-10-08 09:50	0 km/h	702.0	30.0	686.0	29.0	708.0	30.0	708.0	28.0	713.0	29.0	702.0	28.0
TAC95-446	2015-10-08 09:45	0 km/h	702.0	30.0	686.0	30.0	708.0	30.0	708.0	28.0	713.0	30.0	702.0	28.0
TAC95-446	2015-10-08 09:40	0 km/h	702.0	30.0	691.0	31.0	708.0	30.0	713.0	28.0	713.0	30.0	702.0	28.0
TAC95-446	2015-10-08 09:35	0 km/h	708.0	30.0	691.0	31.0	708.0	29.0	713.0	28.0	713.0	30.0	702.0	28.0
TAC95-446	2015-10-08 09:30	0 km/h	702.0	31.0	691.0	31.0	708.0	30.0	713.0	28.0	713.0	30.0	702.0	28.0
TAC95-446	2015-10-08 09:25	0 km/h	702.0	30.0	691.0	31.0	708.0	30.0	708.0	28.0	713.0	30.0	702.0	28.0
TAC95-446	2015-10-08 09:20	0 km/h	702.0	29.0	691.0	30.0	708.0	29.0	713.0	27.0	713.0	30.0	697.0	27.0
TAC95-446	2015-10-08 09:15	0 km/h	702.0	29.0	691.0	29.0	708.0	28.0	708.0	27.0	713.0	29.0	697.0	27.0

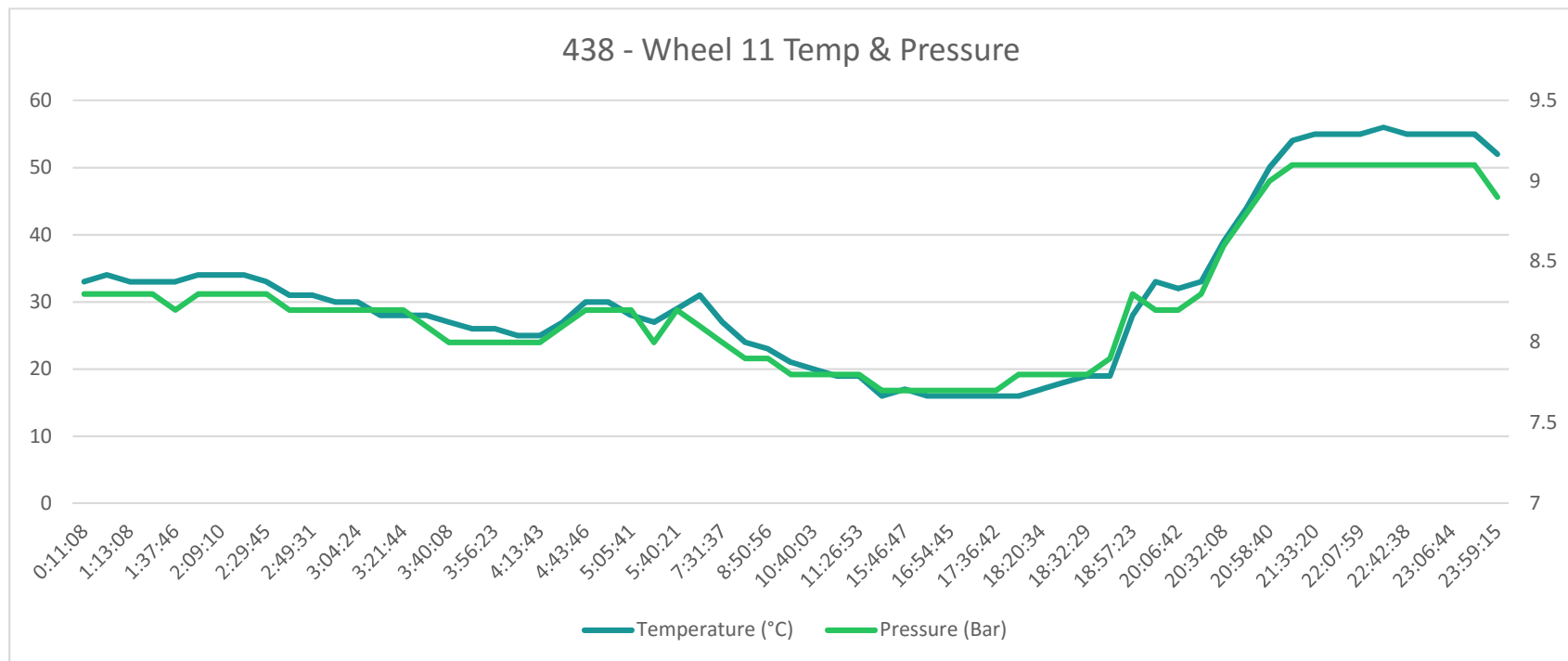
1 Export data to Excel (csv) for more detailed analysis, organisation, charts

2 View actual “events” in detail for investigative reporting

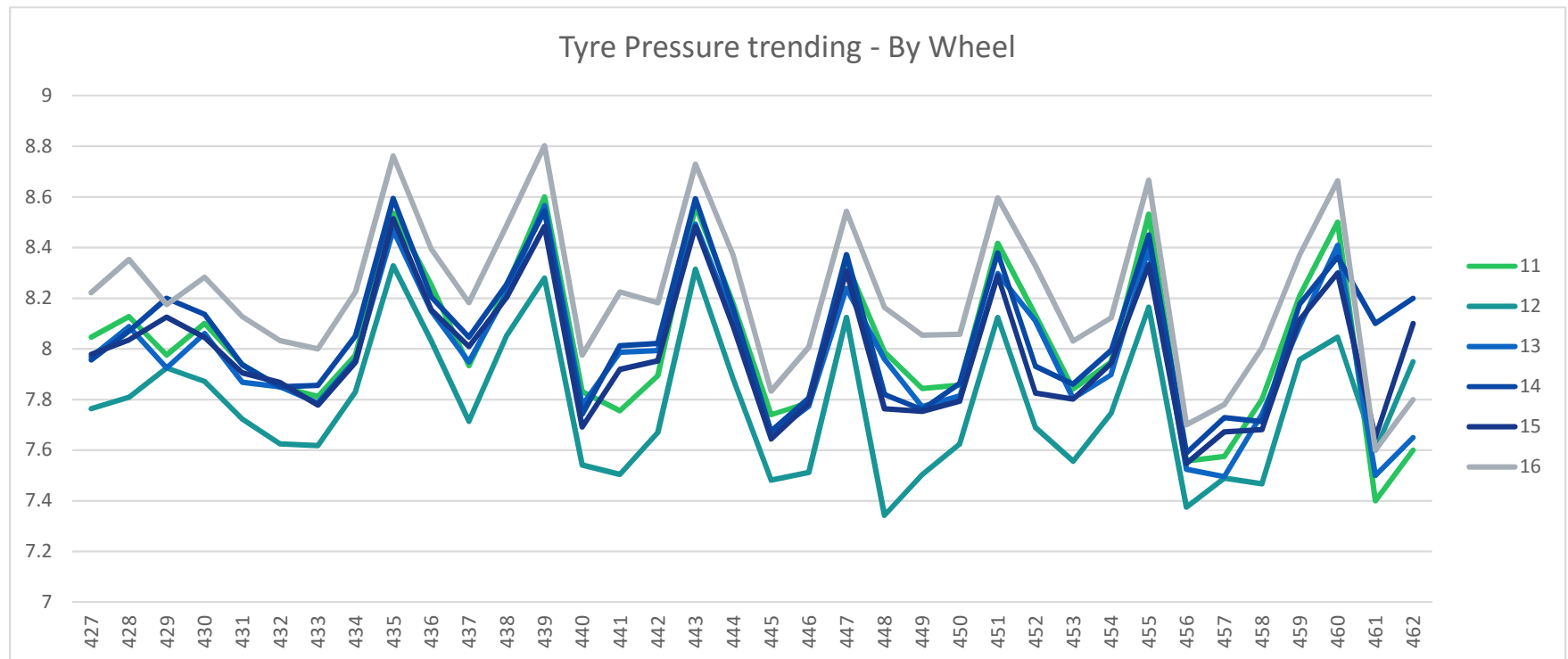
## Distribution of Temperature and Pressure (all wheels combined)



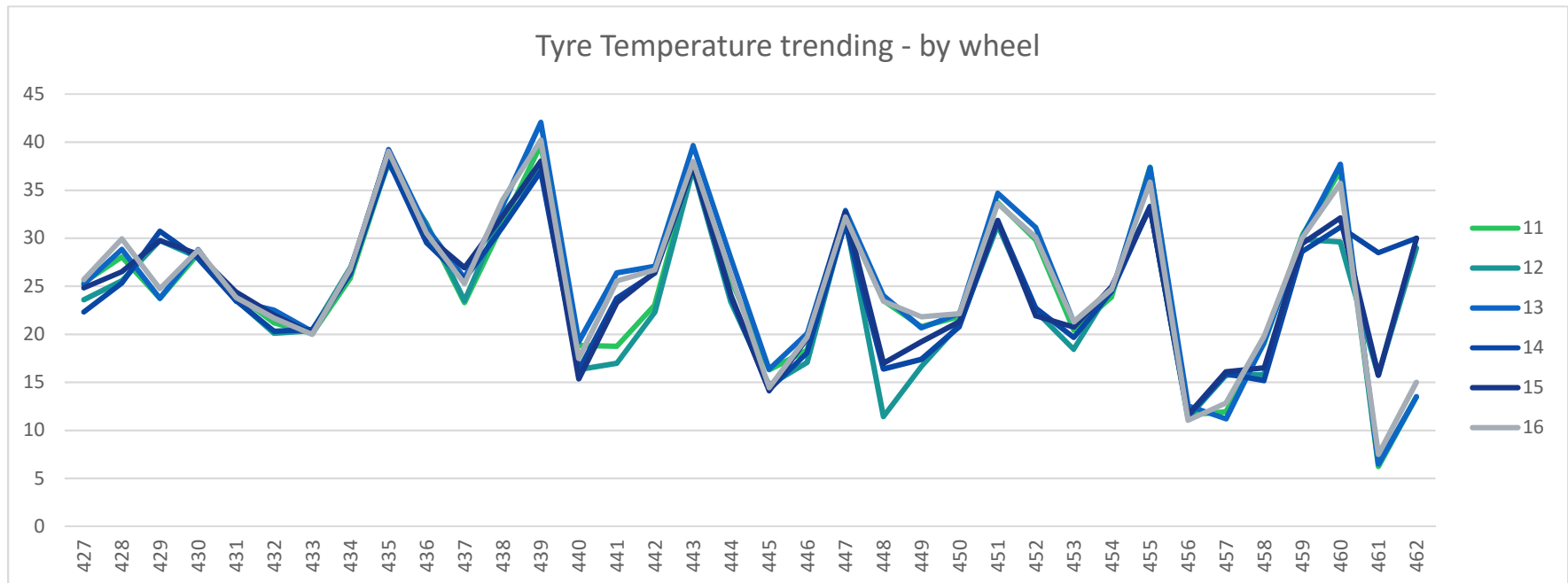
## Temperature and Pressure (wheel 11)



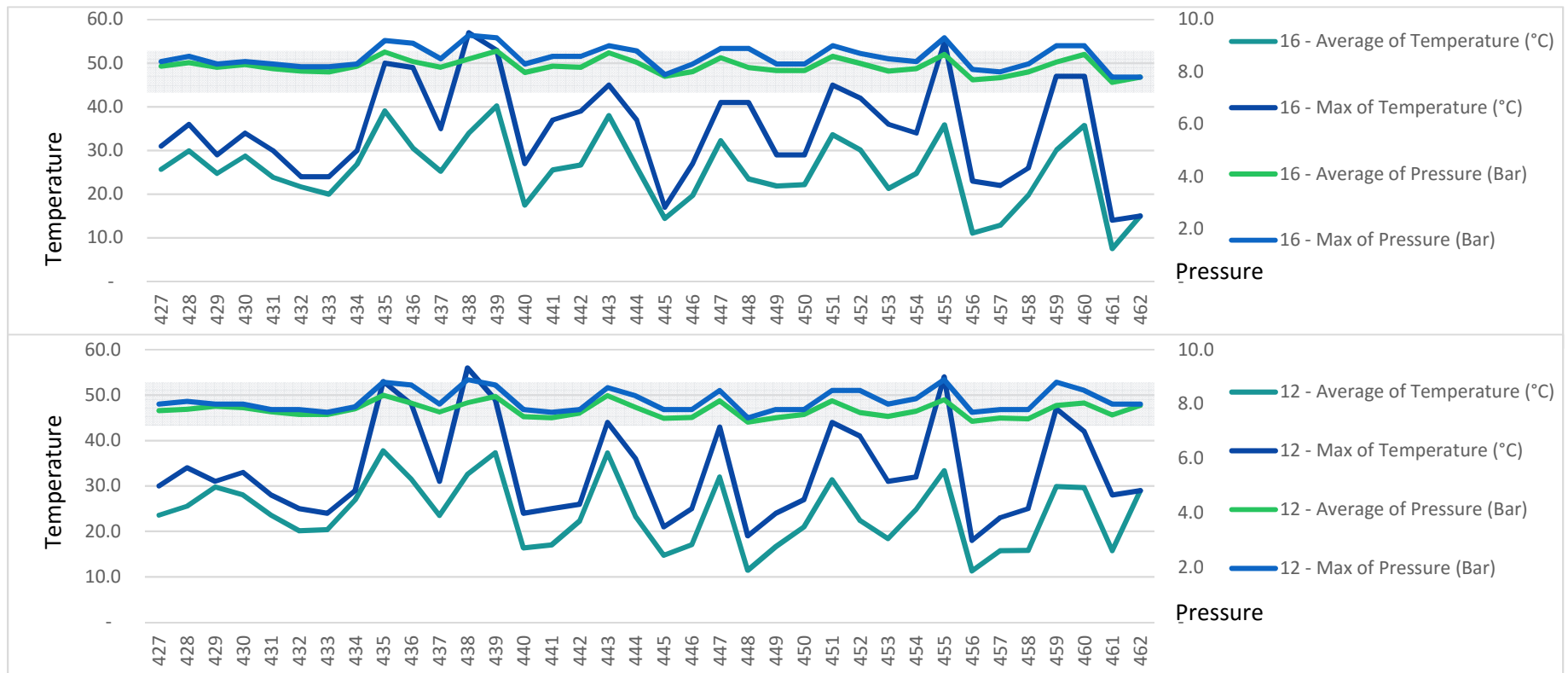
## Tyre Pressure: By position



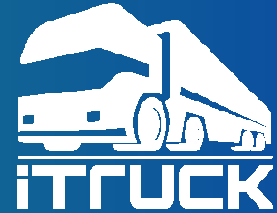
## Tyre Temperature: By position



# Over-inflation Vs Under-inflation



## Conclusion & Summary



1

**SAVE MONEY** by maximising tyre performance, reducing fuel consumption and preventing unnecessary breakdowns.

2

**All inclusive flexible purchase options inclusive of data, web access and equipment.**

3

**Translogik's systems are focused on maximising tyre life and performance and encouraging safe working practices. We utilise our own staff to design and manufacture sensors and systems for the automotive industry. We continue to listen to customer feedback which in turn leads to a continuous development programme of our iTruck solution and as new or improved technologies become available.**

